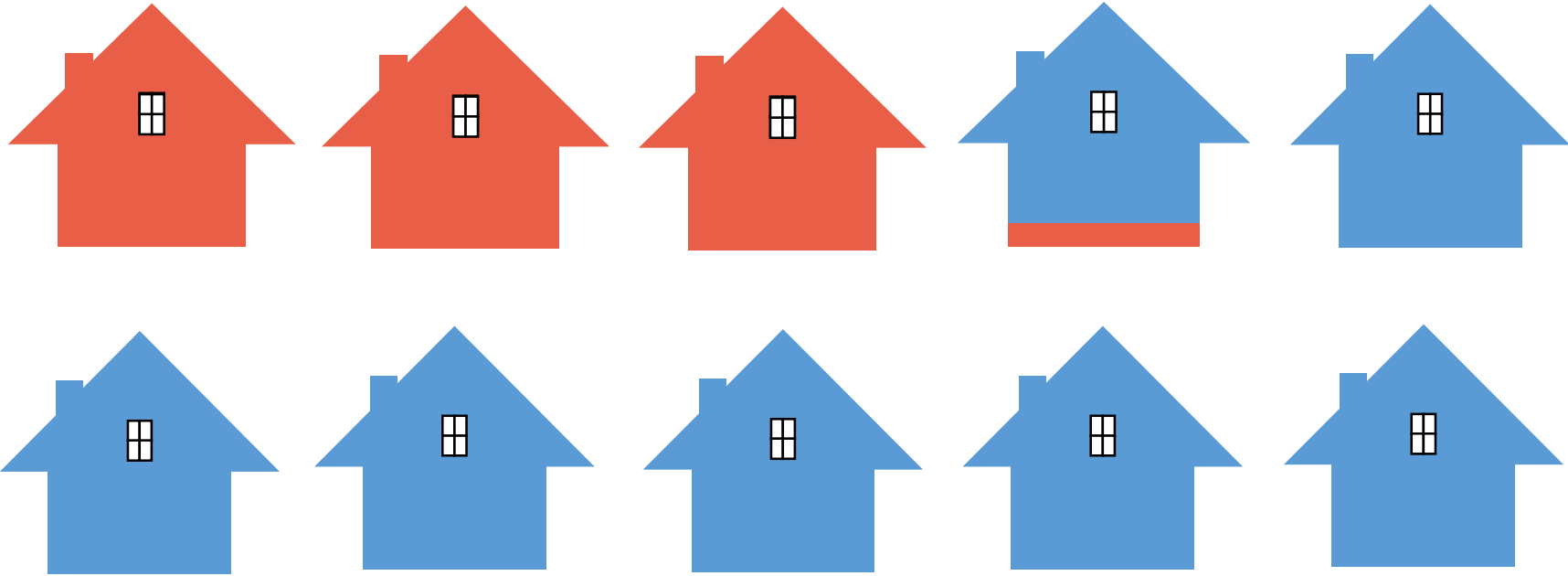


Median Home Value of Owner Occupied Units	
Larimer County	\$251,600
Colorado	\$239,400
USA	\$175,700

36 % of Larimer County Households spend more than 30% of their Household Income on rent or mortgage, qualifying them as “cost burdened”. This is slightly higher than Colorado and the USA, which are both at 35%



Source: US Census, American Fact Finder 2014 ACS 5 Yr Estimates

Median Household Income

Larimer County: \$58,844

Colorado: \$59,448

United States: \$58,844



Larimer County: \$43,584

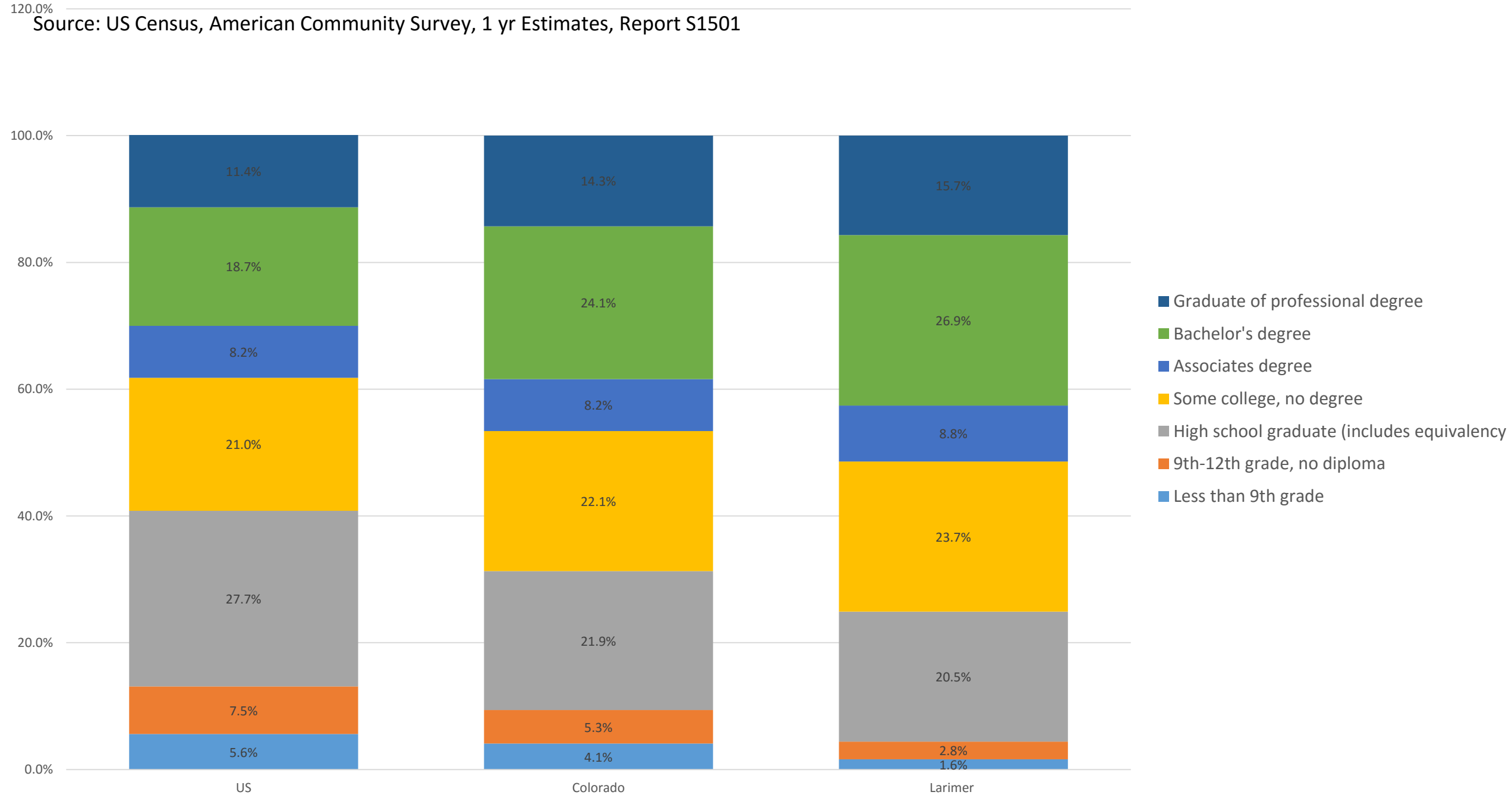
Colorado: \$48,869

United States: \$46,049

Per Capita Income

Educational Attainment (population 25 years and over)

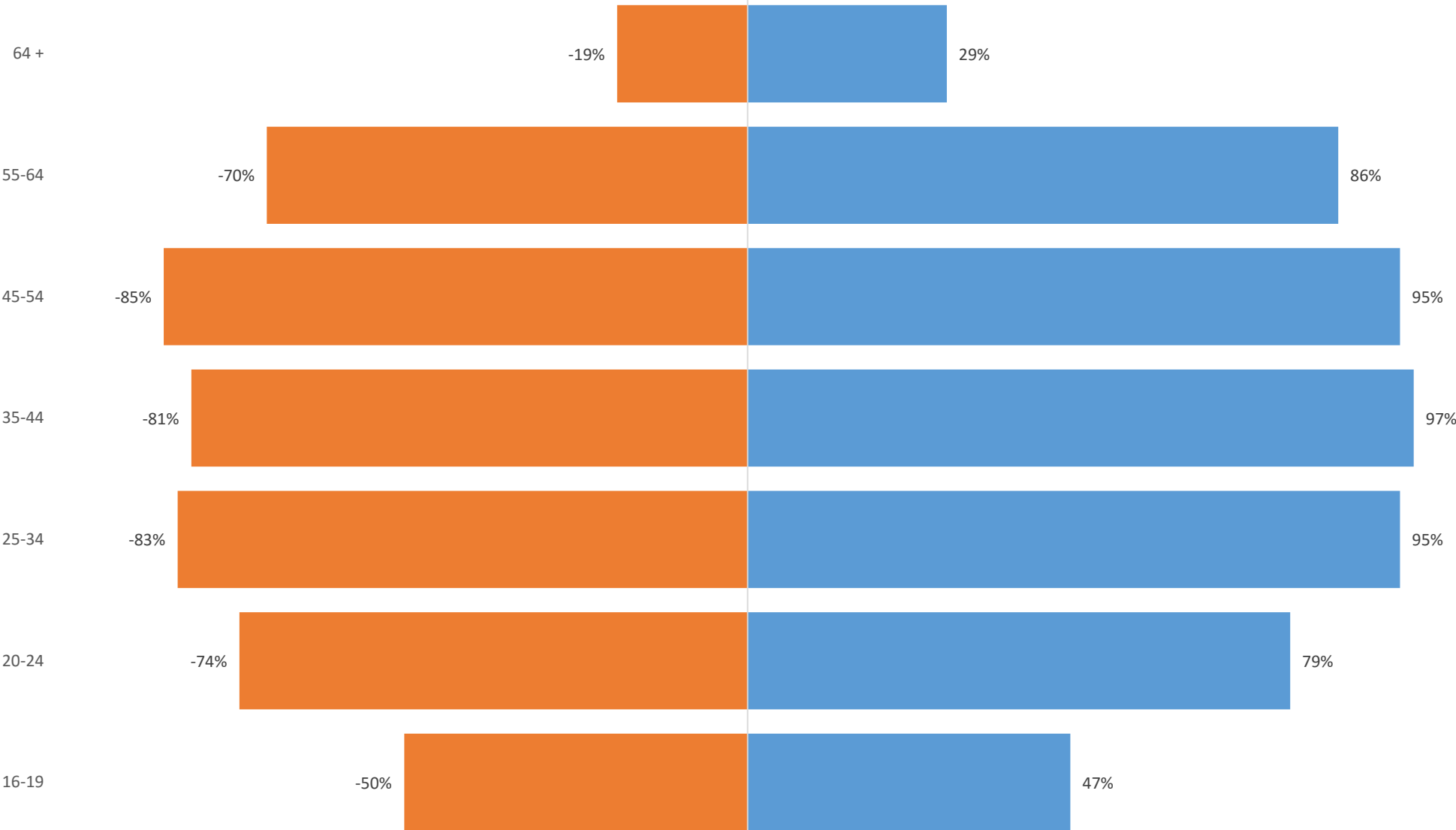
Source: US Census, American Community Survey, 1 yr Estimates, Report S1501



Larimer County Labor Force Participation Rate by Age and Gender, 2015

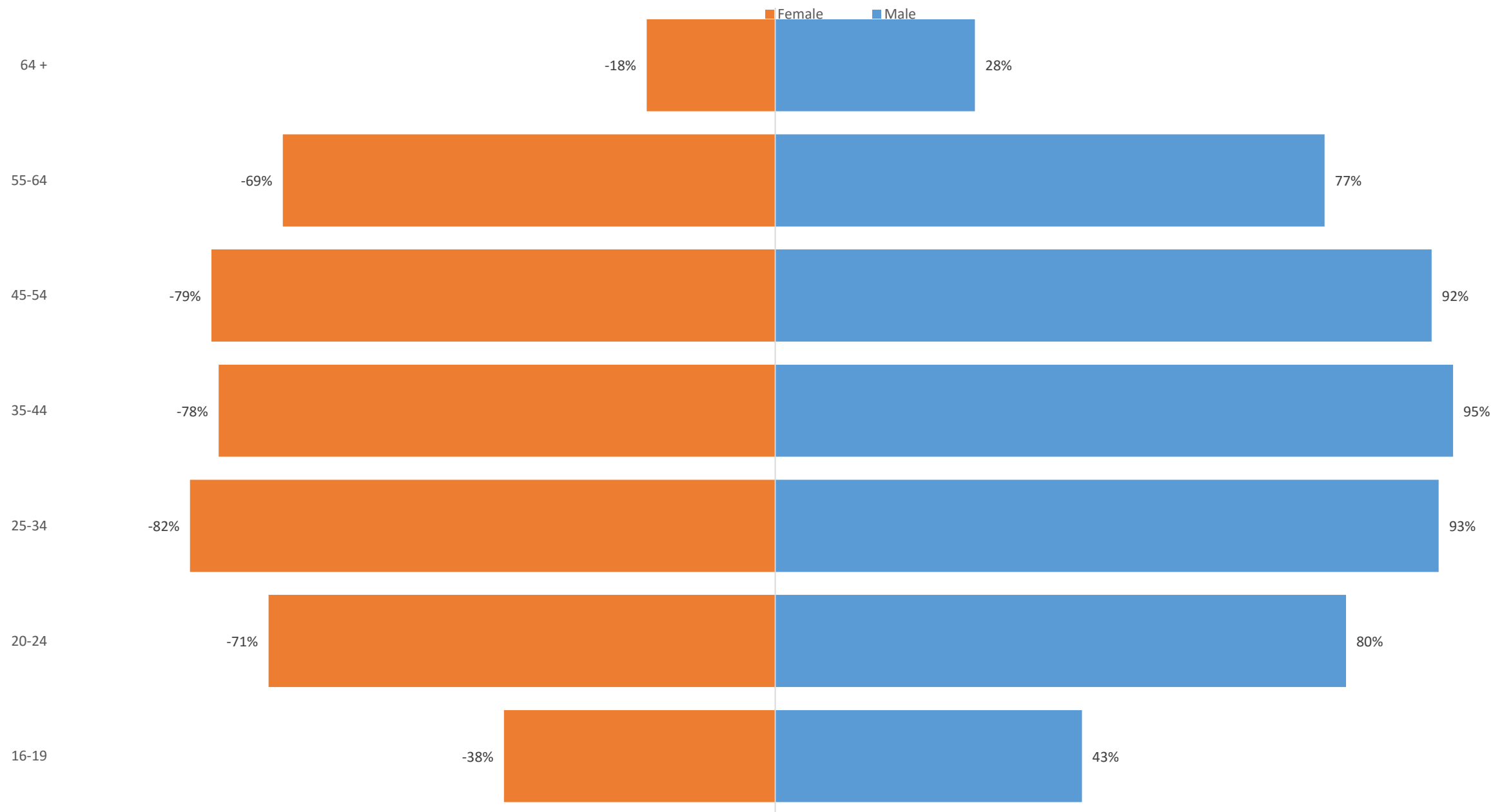
Female Male

Source: Bureau of Labor Statistics: Labor Force Participation Rate (Series ID: LNS11300000)

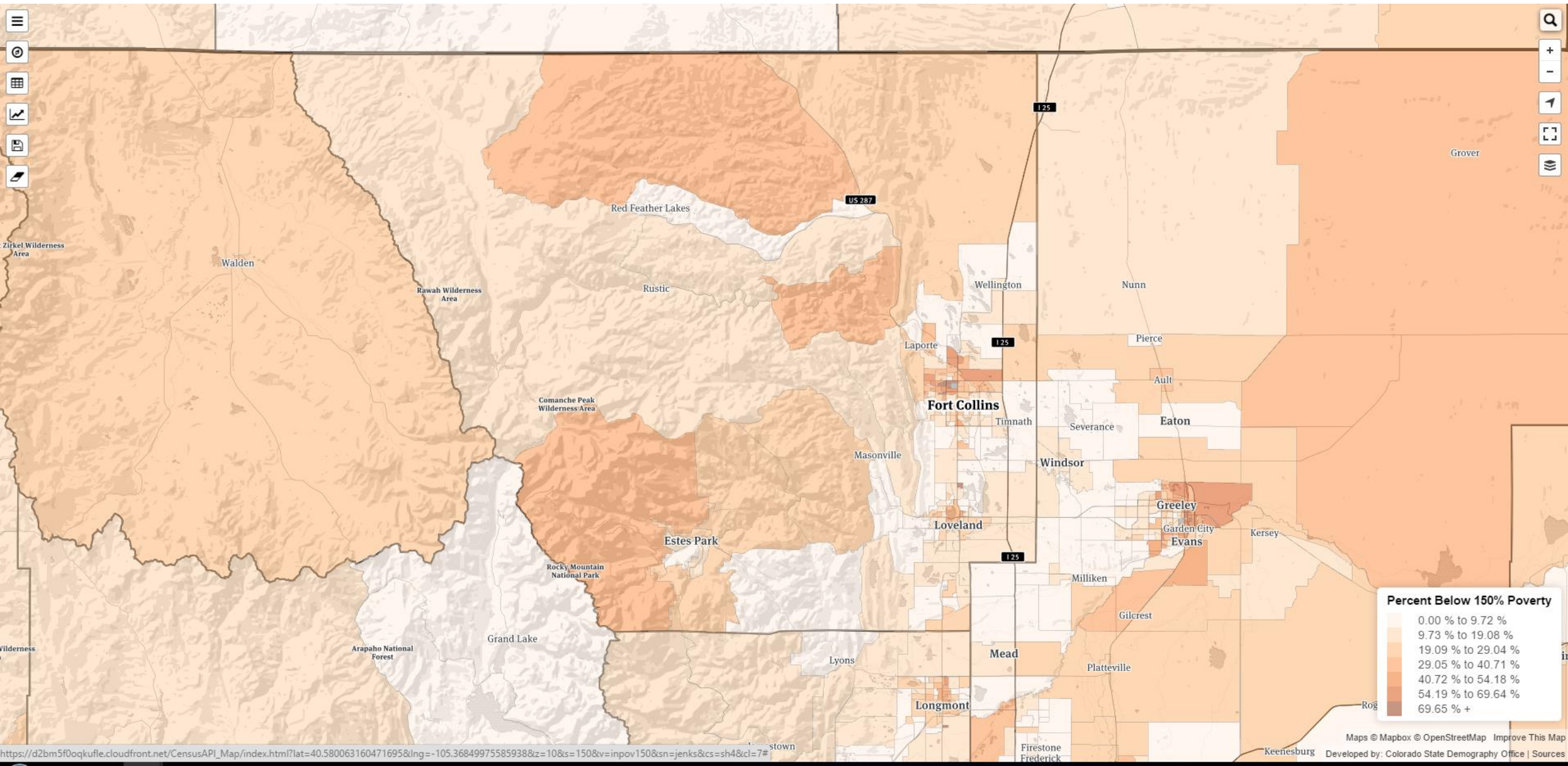


Colorado Labor Force Participation Rate by Age and Gender, 2015

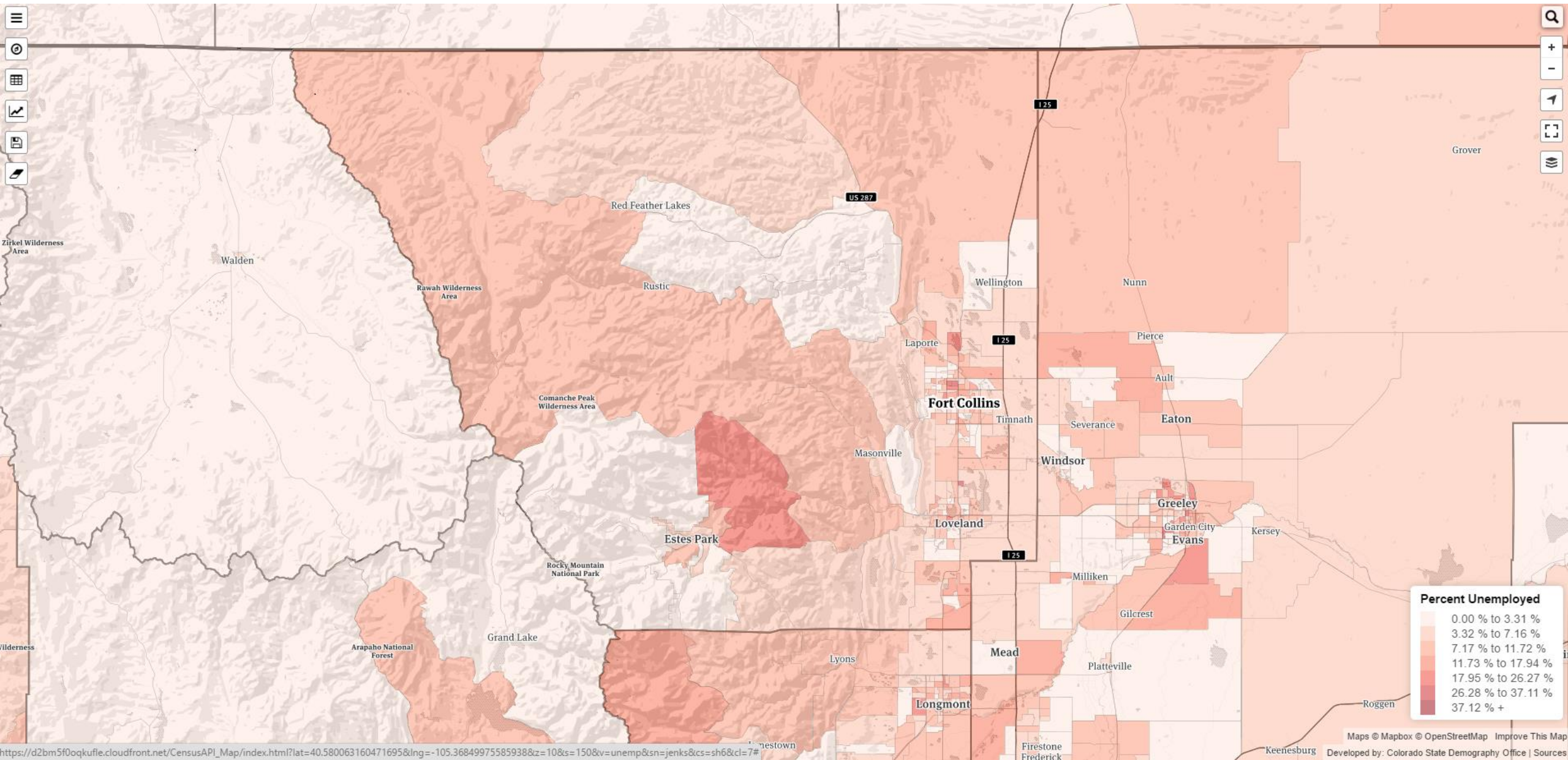
Source: Bureau of Labor Statistics: Labor Force Participation Rate (Series ID: LNS11300000)



Percent of the Population Below 150% of Poverty Level



Percent Unemployed in Larimer County



Source: LEHD: On the Map, Distance and Direction Analysis, Work to Home.



Less than 10 miles



56.4%

The majority of Larimer County residents work less than 10 miles from their home. However, nearly 45% drive over 10 miles, with over 14% driving more than 50 miles to work.



10-24 miles



20.8%



25-50 miles



8.8%



Greater than 50 miles



14.1%

Unemployment Rate, April 2016

Larimer County

3.7%

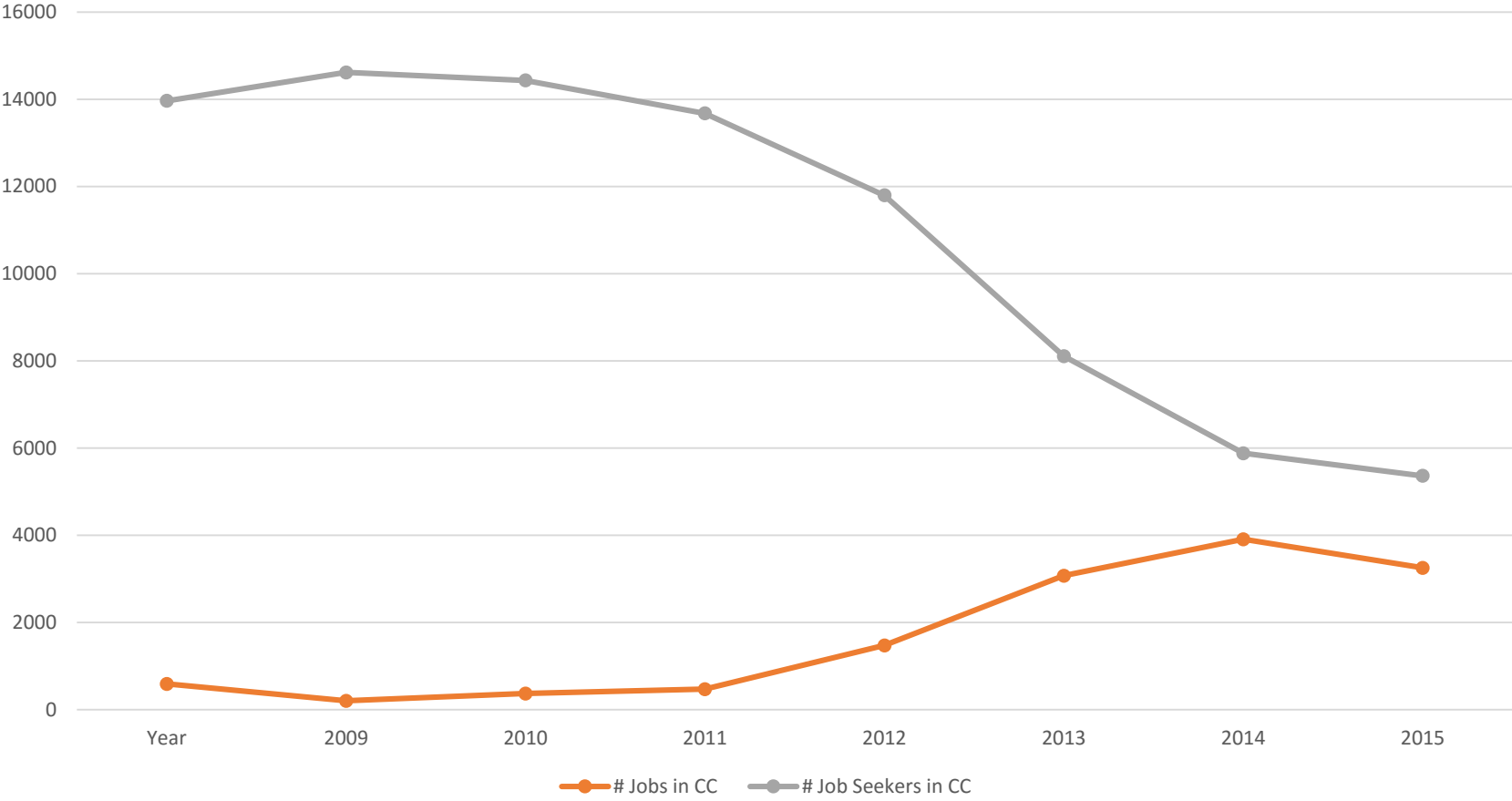
Colorado

4.2%

United States

5.0%

of Jobs and Job Seekers in Connecting Colorado



The number of jobs in Connecting Colorado has steadily increased since 2010. The jump in 2013 can be attributed to the addition of government contract jobs in the system. The number of Job Seekers in the system has steadily fallen since 2009.